



Rocglen Coal Mine- Monthly Monitoring Summary

Site Information

EPL No: 12870

EPA Website Link: <http://epa.nsw.gov.au/prpoeoapp/ViewPOEOLicence.aspx?DOCID=40278&SYSUID=1&LICID=12870>

Licensee: Whitehaven Coal Mining Pty Ltd

Licensee Address: Rocglen Coal Mine, Wean Road, GUNNEDAH NSW 2380

EPL Monitoring Points: See Figure 1 below

Sampling Period: January 2020

Obtained Date: 17th February 2020

Publication Date: 28th February 2020

Table 1 - No Pollutant Limits Apply

EPL ID	Pollutant	Units of Measure	Monitoring Frequency	No. of Samples for the Month	Date(s) Sampled	Date(s) Obtained	Min Value	Mean Value	Median Value	Max or Only Value
4	Particulates-Deposited Matter	g/m ² /month	Continuous	1	16/01/2020	28/01/2020	-	-	-	4.9
6	Particulates-Deposited Matter	g/m ² /month	Continuous	1	16/01/2020	28/01/2020	-	-	-	2.4
10	PM ₁₀	µg/m ³	Every 6 days	5	Various	10/01/2020	23.1	103.22	60.6	277
11	Conductivity	µS/cm	Special Frequency 1*	-	-	-	-	-	-	-
	Total organic carbon	mg/L					-	-	-	-
12	Conductivity	µS/cm	Special Frequency 1*	-	-	-	-	-	-	-
	Total organic carbon	mg/L					-	-	-	-
13	TSS	mg/L	Special Frequency 2**	-	-	-	-	-	-	-
	Conductivity	µS/cm					-	-	-	-
	Oil & Grease	mg/L					-	-	-	-
	pH	pH					-	-	-	-
	Total organic carbon	mg/L					-	-	-	-



WHITEHAVEN COAL

Rocgen Coal Mine- Monthly Monitoring Summary

EPL ID	Pollutant	Units of Measure	Monitoring Frequency	No. of Samples for the Month	Date(s) Sampled	Date(s) Obtained	Min Value	Mean Value	Median Value	Max or Only Value
14	TSS	mg/L	Special Frequency 2**	-	-	-	-	-	-	-
	Conductivity	µS/cm					-	-	-	-
	Oil & Grease	mg/L					-	-	-	-
	pH	pH					-	-	-	-
	Total organic carbon	mg/L					-	-	-	-
15	TSS	mg/L	Special Frequency 2**	-	-	-	-	-	-	-
	Conductivity	µS /cm					-	-	-	-
	Oil & Grease	mg/L					-	-	-	-
	pH	pH					-	-	-	-
	Total organic carbon	mg/L					-	-	-	-

¹result caused by a regional dust event, not mine related.

Table 2 - Pollutant Limits Apply

EPL ID	Pollutant	Units of Measure	Monitoring Frequency	No. of Samples for the Month	Date(s) Sampled	Date(s) Obtained	Min Value	Max or Only Value	100%ile Limit	Exceedance (Yes/No)	Comments
11	TSS	mg/L	Special Frequency 1*	-	-	-	-	-	50	-	-
	Oil & Grease	mg/L					-	-	10	-	
	pH	pH					-	-	6.5-8.5	-	
12	TSS	mg/L	Special Frequency 1*	-	-	-	-	-	50	-	-
	Oil & Grease	mg/L					-	-	10	-	
	pH	pH					-	-	6.5-8.5	-	

* Special Frequency 1 means the collection of samples as soon as practicable after each discharge commences and in any case not more than 12 hours after each discharge commences.

Rocgen Coal Mine- Monthly Monitoring Summary

** Special Frequency 2 means collection of samples quarterly (in the event of flow during the quarter) at a time when there is flow and as soon as practicable after each wet weather discharge from points 11 and 12 commences and in any case not more than 12 hours after each discharge commences.

Table 3 – Monitoring (Quarterly & Yearly – No Limits apply)

EPL ID	Pollutant	Units of Measure	Monitoring Frequency	No. of Samples for the Month	Date Sampled	Date Obtained	Min Value	Mean Value	Median Value	Max Value/Only Value
16	Aluminium	mg/L	Yearly	-	-	-	-	-	-	-
	Arsenic	mg/L					-	-	-	-
	Bicarbonate	mg/L					-	-	-	-
	Chloride	mg/L					-	-	-	-
	Iron	mg/L					-	-	-	-
	Manganese	mg/L					-	-	-	-
	Sodium	mg/L					-	-	-	-
16	Conductivity	µS/cm	Quarterly	-	-	-	-	-	-	-
	Oil & Grease	mg/L					-	-	-	-
	pH	pH					-	-	-	-
	TOC	mg/L					-	-	-	-
	TSS	mg/L					-	-	-	-



WHITEHAVEN COAL

Rocglen Coal Mine- Monthly Monitoring Summary
Table 4- Monitoring (Noise – Limits Apply)

EPL ID	Date	Start Time	Period (mins)	Rocglen Measured Levels – dB(A) Leq 15min Day	Rocglen Measured Levels – dB(A) Leq 15min Evening	Rocglen Measured Levels – dB(A) Leq 15min Night	Rocglen Measured Levels – dB(A) LA 1min Night	Limits	Wind speed (m/s)	Compliant (Y/N)	Comments	
N1												

Note: Measured noise levels are not necessarily the result of activity at Rocglen Coal Mine



WHITEHAVEN COAL

Rocgen Coal Mine- Monthly Monitoring Summary
Figure 1 – EPL 12870 Monitoring Locations





Rocglen Coal Mine- Monthly Monitoring Summary

Site Information

EPL No: 12870

EPA Website Link: <http://epa.nsw.gov.au/prpoeoapp/ViewPOEOLicence.aspx?DOCID=40278&SYSUID=1&LICID=12870>

Licensee: Whitehaven Coal Mining Pty Ltd

Licensee Address: Rocglen Coal Mine, Wean Road, GUNNEDAH NSW 2380

EPL Monitoring Points: See Figure 1 below

Sampling Period: February 2020

Obtained Date: 9th March 2020

Publication Date: 20th March 2020

Table 1 - No Pollutant Limits Apply

EPL ID	Pollutant	Units of Measure	Monitoring Frequency	No. of Samples for the Month	Date(s) Sampled	Date(s) Obtained	Min Value	Mean Value	Median Value	Max or Only Value
4	Particulates-Deposited Matter	g/m ² /month	Continuous	1	18/02/20	28/02/20	-	-	-	1.9
6	Particulates-Deposited Matter	g/m ² /month	Continuous	1	18/02/20	28/02/20	-	-	-	0.7
10	PM ₁₀	µg/m ³	Every 6 days	5	Various	9/03/20	3.2	25.9	19.6	61.8
11	Conductivity	µS/cm	Special Frequency 1*	1	11/02/20	15/02/20	-	-	-	179
	Total organic carbon	mg/L					-	-	-	19
12	Conductivity	µS/cm	Special Frequency 1*	-	-	-	-	-	-	-
	Total organic carbon	mg/L					-	-	-	-
13	TSS	mg/L	Special Frequency 2**	1	12/02/20	15/02/20	-	-	-	1720
	Conductivity	µS/cm					-	-	-	133
	Oil & Grease	mg/L					-	-	-	<5
	pH	pH					-	-	-	7.38
	Total organic carbon	mg/L					-	-	-	13



WHITEHAVEN COAL

Rocgen Coal Mine- Monthly Monitoring Summary

EPL ID	Pollutant	Units of Measure	Monitoring Frequency	No. of Samples for the Month	Date(s) Sampled	Date(s) Obtained	Min Value	Mean Value	Median Value	Max or Only Value
14	TSS	mg/L	Special Frequency 2**	1	10/02/20	15/02/20	-	-	-	86
	Conductivity	µS/cm					-	-	-	117
	Oil & Grease	mg/L					-	-	-	82
	pH	pH					-	-	-	7.58
	Total organic carbon	mg/L					-	-	-	6
15	TSS	mg/L	Special Frequency 2**	1	12/02/20	15/02/20	-	-	-	73
	Conductivity	µS /cm					-	-	-	83
	Oil & Grease	mg/L					-	-	-	<5
	pH	pH					-	-	-	7.09
	Total organic carbon	mg/L					-	-	-	8

Table 2 - Pollutant Limits Apply

EPL ID	Pollutant	Units of Measure	Monitoring Frequency	No. of Samples for the Month	Date(s) Sampled	Date(s) Obtained	Min Value	Max or Only Value	100%ile Limit	Exceedance (Yes/No)	Comments
11	TSS	mg/L	Special Frequency 1*	1	11/02/20	15/02/20	-	1440	50	No	>38.4 mm received in 5 days prior to discharge
	Oil & Grease	mg/L					-	<5	10	No	
	pH	pH					-	7.39	6.5-8.5	No	
12	TSS	mg/L	Special Frequency 1*	-	-	-	-	-	50	-	-
	Oil & Grease	mg/L					-	-	10	-	
	pH	pH					-	-	6.5-8.5	-	

* Special Frequency 1 means the collection of samples as soon as practicable after each discharge commences and in any case not more than 12 hours after each discharge commences.



Rocgen Coal Mine- Monthly Monitoring Summary

** Special Frequency 2 means collection of samples quarterly (in the event of flow during the quarter) at a time when there is flow and as soon as practicable after each wet weather discharge from points 11 and 12 commences and in any case not more than 12 hours after each discharge commences.

Table 3 – Monitoring (Quarterly & Yearly – No Limits apply)

EPL ID	Pollutant	Units of Measure	Monitoring Frequency	No. of Samples for the Month	Date Sampled	Date Obtained	Min Value	Mean Value	Median Value	Max Value/Only Value
16	Aluminium	mg/L	Yearly	-	-	-	-	-	-	-
	Arsenic	mg/L					-	-	-	-
	Bicarbonate	mg/L					-	-	-	-
	Chloride	mg/L					-	-	-	-
	Iron	mg/L					-	-	-	-
	Manganese	mg/L					-	-	-	-
	Sodium	mg/L					-	-	-	-
16	Conductivity	µS/cm	Quarterly	-	-	-	-	-	-	-
	Oil & Grease	mg/L					-	-	-	-
	pH	pH					-	-	-	-
	TOC	mg/L					-	-	-	-
	TSS	mg/L					-	-	-	-



WHITEHAVEN COAL

Rocglen Coal Mine- Monthly Monitoring Summary
Table 4- Monitoring (Noise – Limits Apply)

EPL ID	Date	Start Time	Period (mins)	Rocglen Measured Levels – dB(A) Leq 15min Day	Rocglen Measured Levels – dB(A) Leq 15min Evening	Rocglen Measured Levels – dB(A) Leq 15min Night	Rocglen Measured Levels – dB(A) LA 1min Night	Limits	Wind speed (m/s)	Compliant (Y/N)	Comments	
N1												

Note: Measured noise levels are not necessarily the result of activity at Rocglen Coal Mine



WHITEHAVEN COAL

Rocgen Coal Mine- Monthly Monitoring Summary
Figure 1 – EPL 12870 Monitoring Locations





Rocglen Coal Mine- Monthly Monitoring Summary

Site Information

EPL No: 12870

EPA Website Link: <http://epa.nsw.gov.au/prpoeoapp/ViewPOEOLicence.aspx?DOCID=40278&SYSUID=1&LICID=12870>

Licensee: Whitehaven Coal Mining Pty Ltd

Licensee Address: Rocglen Coal Mine, Wean Road, GUNNEDAH NSW 2380

EPL Monitoring Points: See Figure 1 below

Sampling Period: March 2020

Obtained Date: 8th April 2020

Publication Date: 20th April 2020

Table 1 - No Pollutant Limits Apply

EPL ID	Pollutant	Units of Measure	Monitoring Frequency	No. of Samples for the Month	Date(s) Sampled	Date(s) Obtained	Min Value	Mean Value	Median Value	Max or Only Value
4	Particulates-Deposited Matter	g/m ² /month	Continuous	1	18/03/2020	25/03/2020	-	-	-	0.4
6	Particulates-Deposited Matter	g/m ² /month	Continuous	1	18/03/2020	25/03/2020	-	-	-	0.9
10	PM ₁₀	µg/m ³	Every 6 days	5	Various	8/04/2020	8.3	22.4	11.9	48.9
11	Conductivity	µS/cm	Special Frequency 1*	-	-	-	-	-	-	-
	Total organic carbon	mg/L					-	-	-	-
12	Conductivity	µS/cm	Special Frequency 1*	-	-	-	-	-	-	-
	Total organic carbon	mg/L					-	-	-	-
13	TSS	mg/L	Special Frequency 2**	-	-	-	-	-	-	-
	Conductivity	µS/cm					-	-	-	-
	Oil & Grease	mg/L					-	-	-	-
	pH	pH					-	-	-	-
	Total organic carbon	mg/L					-	-	-	-



WHITEHAVEN COAL

Rocgen Coal Mine- Monthly Monitoring Summary

EPL ID	Pollutant	Units of Measure	Monitoring Frequency	No. of Samples for the Month	Date(s) Sampled	Date(s) Obtained	Min Value	Mean Value	Median Value	Max or Only Value
14	TSS	mg/L	Special Frequency 2**	-	-	-	-	-	-	-
	Conductivity	µS/cm					-	-	-	-
	Oil & Grease	mg/L					-	-	-	-
	pH	pH					-	-	-	-
	Total organic carbon	mg/L					-	-	-	-
15	TSS	mg/L	Special Frequency 2**	-	-	-	-	-	-	-
	Conductivity	µS /cm					-	-	-	-
	Oil & Grease	mg/L					-	-	-	-
	pH	pH					-	-	-	-
	Total organic carbon	mg/L					-	-	-	-

Table 2 - Pollutant Limits Apply

EPL ID	Pollutant	Units of Measure	Monitoring Frequency	No. of Samples for the Month	Date(s) Sampled	Date(s) Obtained	Min Value	Max or Only Value	100%ile Limit	Exceedance (Yes/No)	Comments
11	TSS	mg/L	Special Frequency 1*	-	-	-	-	-	50	-	-
	Oil & Grease	mg/L					-	-	10	-	
	pH	pH					-	-	6.5-8.5	-	
12	TSS	mg/L	Special Frequency 1*	-	-	-	-	-	50	-	-
	Oil & Grease	mg/L					-	-	10	-	
	pH	pH					-	-	6.5-8.5	-	

* Special Frequency 1 means the collection of samples as soon as practicable after each discharge commences and in any case not more than 12 hours after each discharge commences.

** Special Frequency 2 means collection of samples quarterly (in the event of flow during the quarter) at a time when there is flow and as soon as practicable after each wet weather discharge from points 11 and 12 commences and in any case not more than 12 hours after each discharge commences.

Rocgen Coal Mine- Monthly Monitoring Summary

Table 3 – Monitoring (Quarterly & Yearly – No Limits apply)

EPL ID	Pollutant	Units of Measure	Monitoring Frequency	No. of Samples for the Month	Date Sampled	Date Obtained	Min Value	Mean Value	Median Value	Max Value/Only Value
16	Aluminium	mg/L	Yearly	-	-	-	-	-	-	-
	Arsenic	mg/L					-	-	-	-
	Bicarbonate	mg/L					-	-	-	-
	Chloride	mg/L					-	-	-	-
	Iron	mg/L					-	-	-	-
	Manganese	mg/L					-	-	-	-
	Sodium	mg/L					-	-	-	-
16	Conductivity	µS/cm	Quarterly	1	10/03/2020	19/03/2020	-	-	-	595
	Oil & Grease	mg/L					-	-	-	<5
	pH	pH					-	-	-	8.5
	TOC	mg/L					-	-	-	<1
	TSS	mg/L					-	-	-	193

Rocgen Coal Mine- Monthly Monitoring Summary

Table 4-1 and 4-3– Monitoring (Noise – Limits Apply)

Note: Measured noise levels are not necessarily the result of activity at Rocgen Coal Mine

Table 4-1 Summary of noise assessment at N1

Date	Time	Noise Limits $L_{Aeq,15\ min}$	N1 Mine L_{Aeq} Noise Level (dB)		
			Measured Mine Contribution	Additional LF Penalty	Exceedance
02/03/2020	13:56	35	<26 (I/A) ¹	-	0
	19:57	35	<26 (I/A) ¹	-	0
	20:12	35	<27 (I/A) ¹	-	0
	23:37	35	0 ²	-	0
	23:52	35	0 ²	-	0
04/03/2020	10:47	35	<22 (I/A) ¹	-	0
	11:02	35	<25 (I/A) ¹	-	0

¹ Where mine noise was inaudible throughout the entire measurement, it is assumed that the contribution is less than 10dB below the measured L_{A90} .

² The mine was not operating during the night period.

Table 4-3 Summary of noise assessment at N2

Date	Time	Noise Limits $L_{Aeq,15\ min}$	N2 Mine L_{Aeq} Noise Level (dB)		
			Measured Mine Contribution	Additional LF Penalty	Exceedance
02/03/2020	11:36	35	<26 (I/A) ¹	-	0
	21:29	35	<19 (I/A) ¹	-	0
	21:44	35	<20 (I/A) ¹	-	0
	22:14	35	0 ²	-	0
	22:29	35	0 ²	-	0
	22:44	35	0 ²	-	0
04/03/2020	13:59	35	<21 (IA) ¹	-	0

¹ Where mine noise was inaudible throughout the entire measurement, it is assumed that the contribution is less than 10dB below the measured L_{A90} .

² The mine was not operating during the night period.



WHITEHAVEN COAL

Rocglen Coal Mine- Monthly Monitoring Summary
Figure 1 – EPL 12870 Monitoring Locations





Rocglen Coal Mine- Monthly Monitoring Summary

Site Information

EPL No: 12870

EPA Website Link: <http://epa.nsw.gov.au/prpoeoapp/ViewPOEOLicence.aspx?DOCID=40278&SYSUID=1&LICID=12870>

Licensee: Whitehaven Coal Mining Pty Ltd

Licensee Address: Rocglen Coal Mine, Wean Road, GUNNEDAH NSW 2380

EPL Monitoring Points: See Figure 1 below

Sampling Period: April 2020

Obtained Date: 11th May 2020

Publication Date: 20th May 2020

Table 1 - No Pollutant Limits Apply

EPL ID	Pollutant	Units of Measure	Monitoring Frequency	No. of Samples for the Month	Date(s) Sampled	Date(s) Obtained	Min Value	Mean Value	Median Value	Max or Only Value
4	Particulates-Deposited Matter	g/m ² /month	Continuous	1	16/04/2020	23/04/2020	-	-	-	5.3
6	Particulates-Deposited Matter	g/m ² /month	Continuous	1	16/04/2020	23/04/2020	-	-	-	0.9
10	PM ₁₀	µg/m ³	Every 6 days	5	Various	11/05/2020	7.5	12.6	12.3	17.7
11	Conductivity	µS/cm	Special Frequency 1*	-	-	-	-	-	-	-
	Total organic carbon	mg/L					-	-	-	-
12	Conductivity	µS/cm	Special Frequency 1*	-	-	-	-	-	-	-
	Total organic carbon	mg/L					-	-	-	-
13	TSS	mg/L	Special Frequency 2**	-	-	-	-	-	-	-
	Conductivity	µS/cm					-	-	-	-
	Oil & Grease	mg/L					-	-	-	-
	pH	pH					-	-	-	-
	Total organic carbon	mg/L					-	-	-	-



WHITEHAVEN COAL

Rocgen Coal Mine- Monthly Monitoring Summary

EPL ID	Pollutant	Units of Measure	Monitoring Frequency	No. of Samples for the Month	Date(s) Sampled	Date(s) Obtained	Min Value	Mean Value	Median Value	Max or Only Value
14	TSS	mg/L	Special Frequency 2**	-	-	-	-	-	-	-
	Conductivity	µS/cm					-	-	-	-
	Oil & Grease	mg/L					-	-	-	-
	pH	pH					-	-	-	-
	Total organic carbon	mg/L					-	-	-	-
15	TSS	mg/L	Special Frequency 2**	-	-	-	-	-	-	-
	Conductivity	µS /cm					-	-	-	-
	Oil & Grease	mg/L					-	-	-	-
	pH	pH					-	-	-	-
	Total organic carbon	mg/L					-	-	-	-

Table 2 - Pollutant Limits Apply

EPL ID	Pollutant	Units of Measure	Monitoring Frequency	No. of Samples for the Month	Date(s) Sampled	Date(s) Obtained	Min Value	Max or Only Value	100%ile Limit	Exceedance (Yes/No)	Comments
11	TSS	mg/L	Special Frequency 1*	-	-	-	-	-	50	-	-
	Oil & Grease	mg/L					-	-	10	-	
	pH	pH					-	-	6.5-8.5	-	
12	TSS	mg/L	Special Frequency 1*	-	-	-	-	-	50	-	-
	Oil & Grease	mg/L					-	-	10	-	
	pH	pH					-	-	6.5-8.5	-	

* Special Frequency 1 means the collection of samples as soon as practicable after each discharge commences and in any case not more than 12 hours after each discharge commences.

** Special Frequency 2 means collection of samples quarterly (in the event of flow during the quarter) at a time when there is flow and as soon as practicable after each wet weather discharge from points 11 and 12 commences and in any case not more than 12 hours after each discharge commences.

Rocgen Coal Mine- Monthly Monitoring Summary
Table 3 – Monitoring (Quarterly & Yearly – No Limits apply)

EPL ID	Pollutant	Units of Measure	Monitoring Frequency	No. of Samples for the Month	Date Sampled	Date Obtained	Min Value	Mean Value	Median Value	Max Value/Only Value
16	Aluminium	mg/L	Yearly	-	-	-	-	-	-	
	Arsenic	mg/L					-	-	-	
	Bicarbonate	mg/L					-	-	-	
	Chloride	mg/L					-	-	-	
	Iron	mg/L					-	-	-	
	Manganese	mg/L					-	-	-	
	Sodium	mg/L					-	-	-	
16	Conductivity	µS/cm	Quarterly	-	-	-	-	-	-	
	Oil & Grease	mg/L					-	-	-	
	pH	pH					-	-	-	
	TOC	mg/L					-	-	-	
	TSS	mg/L					-	-	-	



WHITEHAVEN COAL

Rocglen Coal Mine- Monthly Monitoring Summary
Figure 1 – EPL 12870 Monitoring Locations





Rocglen Coal Mine- Monthly Monitoring Summary

Site Information

EPL No: 12870

EPA Website Link: <http://epa.nsw.gov.au/prpoeoapp/ViewPOEOLicence.aspx?DOCID=40278&SYSUID=1&LICID=12870>

Licensee: Whitehaven Coal Mining Pty Ltd

Licensee Address: Rocglen Coal Mine, Wean Road, GUNNEDAH NSW 2380

EPL Monitoring Points: See Figure 1 below

Sampling Period: May 2020

Obtained Date: 11th June 2020

Publication Date: 20th June 2020

Table 1 - No Pollutant Limits Apply

EPL ID	Pollutant	Units of Measure	Monitoring Frequency	No. of Samples for the Month	Date(s) Sampled	Date(s) Obtained	Min Value	Mean Value	Median Value	Max or Only Value
4	Particulates-Deposited Matter (BD4)	g/m2/month	Continuous	1	18/05/2020	27/05/2020	-	-	-	2.5
6	Particulates-Deposited Matter (BD6)	g/m2/month	Continuous	1	18/05/2020	27/05/2020	-	-	-	0.9
10	PM ₁₀	µg/m ³	Every 6 days	5	Various	10/06/2020	1.5	7.3	5.5	16.3
11	Conductivity	µS/cm	Special Frequency 1*	1	7/05/2020	13/05/2020	-	-	-	271
	Total Organic Carbon	mg/L					-	-	-	6
12	Conductivity	µS/cm	Special Frequency 1*	-	-	-	-	-	-	-
	Total Organic Carbon	mg/L					-	-	-	-
13	TSS	mg/L	Special Frequency 2**(DDCK)	-	-	-	-	-	-	-
	Conductivity	µS/cm					-	-	-	-
	Oil & Grease	mg/L					-	-	-	-
	pH	pH					-	-	-	-
	Total organic carbon	mg/L					-	-	-	-
14	TSS	mg/L		-	-	-	-	-	-	-
	Conductivity	µS/cm					-	-	-	-



Rocgen Coal Mine- Monthly Monitoring Summary

EPL ID	Pollutant	Units of Measure	Monitoring Frequency	No. of Samples for the Month	Date(s) Sampled	Date(s) Obtained	Min Value	Mean Value	Median Value	Max or Only Value
	Oil & Grease	mg/L	Special Frequency 2**(UNDC)				-	-	-	-
	pH	pH					-	-	-	-
	Total organic carbon	mg/L					-	-	-	-
15	TSS	mg/L	Special Frequency 2** (SD7)	-	-	-	-	-	-	-
	Conductivity	µS /cm					-	-	-	-
	Oil & Grease	mg/L					-	-	-	-
	pH	pH					-	-	-	-
	Total organic carbon	mg/L					-	-	-	-

Table 2 - Pollutant Limits Apply

EPL ID	Pollutant	Units of Measure	Monitoring Frequency	No. of Samples for the Month	Date(s) Sampled	Date(s) Obtained	Min Value	Max or Only Value	100%ile Limit	Exceedance (Yes/No)	Comments
11	TSS	mg/L	Special Frequency 1* (LDP11)	1	7/05/2020	13/05/2020	-	12	50	-	-
	Oil & Grease	mg/L					-	<5	10	-	
	pH	pH					-	7.95	6.5-8.5	-	
12	TSS	mg/L	Special Frequency 1* (LDP12)	-	-	-	-	-	50	-	-
	Oil & Grease	mg/L					-	-	10	-	
	pH	pH					-	-	6.5-8.5	-	

* Special Frequency 1 means the collection of samples as soon as practicable after each discharge commences and in any case not more than 12 hours after each discharge commences.

** Special Frequency 2 means collection of samples quarterly (in the event of flow during the quarter) at a time when there is flow and as soon as practicable after each wet weather discharge from points 11 and 12 commences and in any case not more than 12 hours after each discharge commences.



WHITEHAVEN COAL

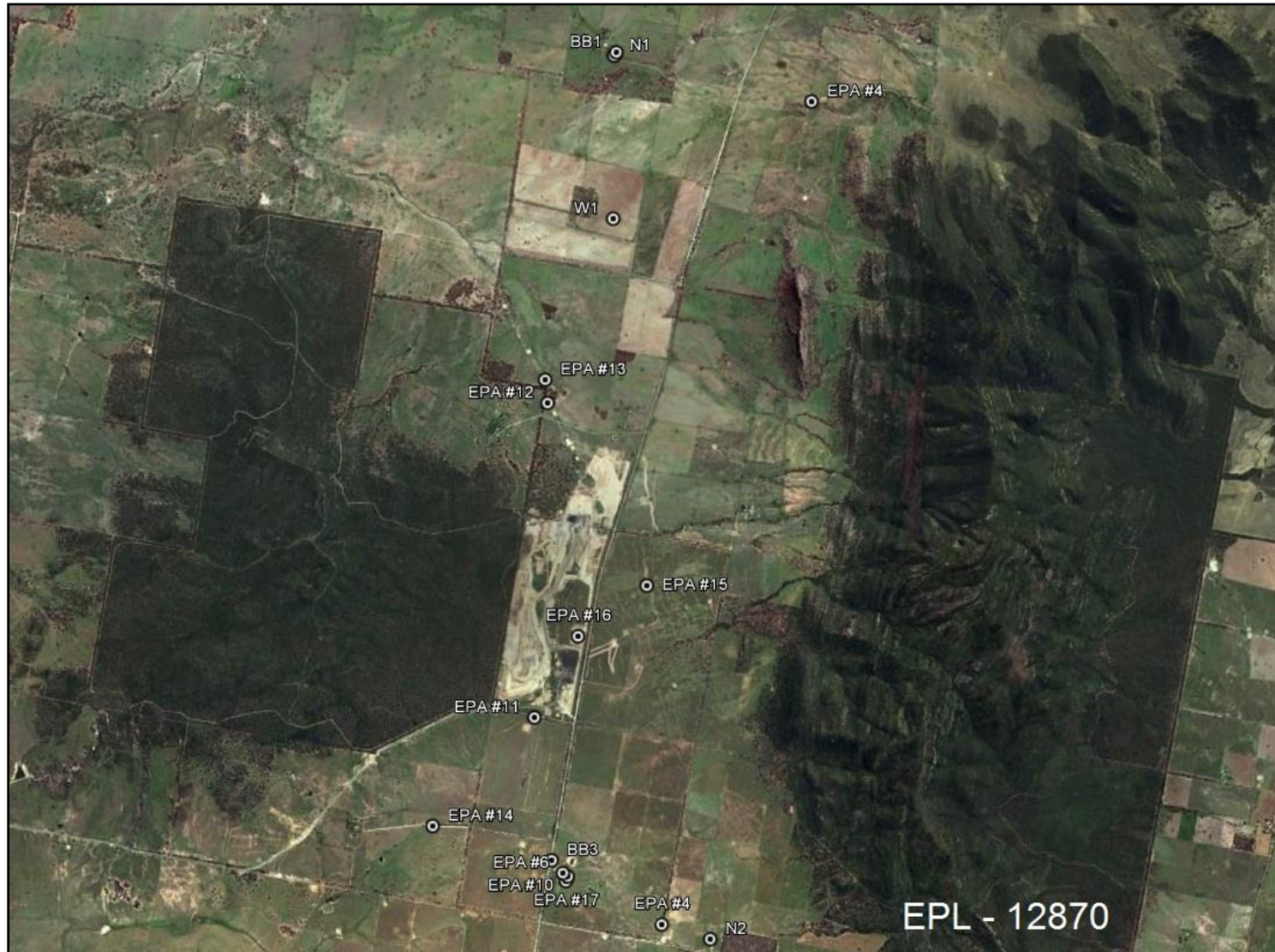
Rocgen Coal Mine- Monthly Monitoring Summary
Table 3 – Monitoring (Quarterly & Yearly – No Limits apply)

EPL ID	Pollutant	Units of Measure	Monitoring Frequency	No. of Samples for the Month	Date Sampled	Date Obtained	Min Value	Mean Value	Median Value	Max Value/Only Value
16	Aluminium	mg/L	Yearly	1	20/05/2020	28/05/2020	-	-	-	4.48
	Arsenic	mg/L					-	-	-	0.008
	Bicarbonate	mg/L					-	-	-	119
	Chloride	mg/L					-	-	-	59
	Iron	mg/L					-	-	-	3.12
	Manganese	mg/L					-	-	-	0.039
	Sodium	mg/L					-	-	-	107
16	Conductivity	µS/cm	Quarterly	1	20/05/2020	28/05/2020	-	-	-	514
	Oil & Grease	mg/L					-	-	-	<5
	pH	pH					-	-	-	8.60
	TOC	mg/L					-	-	-	3
	TSS	mg/L					-	-	-	36



WHITEHAVEN COAL

Rocglen Coal Mine- Monthly Monitoring Summary
Figure 1 – EPL 12870 Monitoring Locations





Rocglen Coal Mine- Monthly Monitoring Summary

Site Information

EPL No: 12870

EPA Website Link: <http://epa.nsw.gov.au/prpoeoapp/ViewPOEOLicence.aspx?DOCID=40278&SYSUID=1&LICID=12870>

Licensee: Whitehaven Coal Mining Pty Ltd

Licensee Address: Rocglen Coal Mine, Wean Road, GUNNEDAH NSW 2380

EPL Monitoring Points: See Figure 1 below

Sampling Period: June 2020

Obtained Date: 13th July 2020

Publication Date: 15th July 2020

Table 1 - No Pollutant Limits Apply

EPL ID	Pollutant	Units of Measure	Monitoring Frequency	No. of Samples for the Month	Date(s) Sampled	Date(s) Obtained	Min Value	Mean Value	Median Value	Max or Only Value
4	Particulates-Deposited Matter (BD4)	g/m2/month	Continuous	1	18/06/2020	25/06/2020	-	-	-	1.8
6	Particulates-Deposited Matter (BD6)	g/m2/month	Continuous	1	18/06/2020	25/06/2020	-	-	-	0.5
10	PM ₁₀	µg/m ³	Every 6 days	5	Various	8/07/2020	0.8	5.04	4.3	8
11	Conductivity	µS/cm	Special Frequency 1*	-	-	-	-	-	-	-
	Total Organic Carbon	mg/L					-	-	-	-
12	Conductivity	µS/cm	Special Frequency 1*	-	-	-	-	-	-	-
	Total Organic Carbon	mg/L					-	-	-	-
13	TSS	mg/L	Special Frequency 2**(DDCK)	-	-	-	-	-	-	-
	Conductivity	µS/cm					-	-	-	-
	Oil & Grease	mg/L					-	-	-	-
	pH	pH					-	-	-	-
	Total organic carbon	mg/L					-	-	-	-
14	TSS	mg/L		-	-	-	-	-	-	-
	Conductivity	µS/cm					-	-	-	-



WHITEHAVEN COAL

Rocgen Coal Mine- Monthly Monitoring Summary

EPL ID	Pollutant	Units of Measure	Monitoring Frequency	No. of Samples for the Month	Date(s) Sampled	Date(s) Obtained	Min Value	Mean Value	Median Value	Max or Only Value
	Oil & Grease	mg/L	Special Frequency 2**(UNDC)				-	-	-	-
	pH	pH					-	-	-	-
	Total organic carbon	mg/L					-	-	-	-
15	TSS	mg/L	Special Frequency 2** (SD7)	-	-	-	-	-	-	-
	Conductivity	µS /cm					-	-	-	-
	Oil & Grease	mg/L					-	-	-	-
	pH	pH					-	-	-	-
	Total organic carbon	mg/L					-	-	-	-

Table 2 - Pollutant Limits Apply

EPL ID	Pollutant	Units of Measure	Monitoring Frequency	No. of Samples for the Month	Date(s) Sampled	Date(s) Obtained	Min Value	Max or Only Value	100%ile Limit	Exceedance (Yes/No)	Comments
11	TSS	mg/L	Special Frequency 1* (LDP11)	-	-	-	-	-	50	-	-
	Oil & Grease	mg/L					-	-	10	-	
	pH	pH					-	-	6.5-8.5	-	
12	TSS	mg/L	Special Frequency 1* (LDP12)	-	-	-	-	-	50	-	-
	Oil & Grease	mg/L					-	-	10	-	
	pH	pH					-	-	6.5-8.5	-	

* Special Frequency 1 means the collection of samples as soon as practicable after each discharge commences and, in any case, not more than 12 hours after each discharge commences.

** Special Frequency 2 means collection of samples quarterly (in the event of flow during the quarter) at a time when there is flow and as soon as practicable after each wet weather discharge from points 11 and 12 commences and in any case not more than 12 hours after each discharge commences.



WHITEHAVEN COAL

Roclen Coal Mine- Monthly Monitoring Summary
Table 3 – Monitoring (Quarterly & Yearly – No Limits apply)

EPL ID	Pollutant	Units of Measure	Monitoring Frequency	No. of Samples for the Month	Date Sampled	Date Obtained	Min Value	Mean Value	Median Value	Max Value/Only Value
16	Aluminium	mg/L	Yearly	-	-	-	-	-	-	-
	Arsenic	mg/L					-	-	-	-
	Bicarbonate	mg/L					-	-	-	-
	Chloride	mg/L					-	-	-	-
	Iron	mg/L					-	-	-	-
	Manganese	mg/L					-	-	-	-
	Sodium	mg/L					-	-	-	-
16	Conductivity	µS/cm	Quarterly	-	-	-	-	-	-	-
	Oil & Grease	mg/L					-	-	-	-
	pH	pH					-	-	-	-
	TOC	mg/L					-	-	-	-
	TSS	mg/L					-	-	-	-



Rocgen Coal Mine- Monthly Monitoring Summary

Quarterly noise monitoring undertaken in June 2020 found no non-conformances.

Table 4-1 Summary of noise assessment at N1

Date	Time	Noise Limits $L_{Aeq,15 min}$	N1 Mine L_{Aeq} Noise Level (dB)		
			Measured Mine Contribution	Additional LF Penalty	Exceedance
09/062020	11:41	35	<12 (IA) ¹	-	0
	11:56	35	<13 (IA) ¹	-	0
	12:11	35	<15 (IA) ¹	-	0
	12:26	35	<20 (IA) ¹	-	0
	12:41	35	<16 (IA) ¹	-	0
	12:56	35	<17 (IA) ¹	-	0
	20:18	35	<8 (IA) ¹	-	0
	20:33	35	<8 (IA) ¹	-	0
	23:18	35	0 ²	-	0
	23:33	35	0 ²	-	0
	23:48	35	0 ²	-	0
	00:03	35	0 ²	-	0
	10/062020	20:14	35	<14 (IA) ¹	-
23:21		35	0 ²	-	0
23:36		35	0 ²	-	0
23:51		35	0 ²	-	0
00:06		35	0 ²	-	0
11/06/2020	11:00	35	<12 (IA) ¹	-	0
	11:15	35	<11 (IA) ¹	-	0
	11:30	35	<13 (IA) ¹	-	0
	11:45	35	<13 (IA) ¹	-	0
	12:00	35	<12 (IA) ¹	-	0
	12:15	35	<15 (IA) ¹	-	0
	20:33	35	<6 (IA) ¹	-	0
	20:48	35	<6 (IA) ¹	-	0
	23:20	35	0 ²	-	0
	23:35	35	0 ²	-	0
23:50	35	0 ²	-	0	
00:05	35	0 ²	-	0	

¹ Where mine noise was inaudible throughout the entire measurement, it is assumed that the contribution is less than 10dB below the measured L_{Aeq} .

² The mine was not operating during the night period.



WHITEHAVEN COAL

Rocgen Coal Mine- Monthly Monitoring Summary

Table 4-3 Summary of noise assessment at N2

Date	Time	N2			
		Noise Limits	Mine L _{90,15 min} Noise Level (dB)		
		LA _{eq,15 min}	Measured Mine Contribution	Additional LF Penalty	Exceedance
09/06/2020	09:51	35	<17 (IA) ¹	-	0
	10:06	35	<15 (IA) ¹	-	0
	10:21	35	<16 (IA) ¹	-	0
	10:36	35	<14 (IA) ¹	-	0
	10:51	35	<13 (IA) ¹	-	0
	11:06	35	<16 (IA) ¹	-	0
	21:29	35	<23 (IA) ¹	-	0
	21:44	35	<22 (IA) ¹	-	0
	21:59	35	0 ²	-	0
	22:14	35	0 ²	-	0
	22:29	35	0 ²	-	0
	22:44	35	0 ²	-	0
10/06/2020	13:18	35	<15 (IA) ¹	-	0
	13:48	35	<15 (IA) ¹	-	0
	14:03	35	<20 (IA) ¹	-	0
	14:33	35	<17 (IA) ¹	-	0
	21:30	35	<10 (IA) ¹	-	0
	21:45	35	<12 (IA) ¹	-	0
	22:00	35	0 ²	-	0
	22:15	35	0 ²	-	0
	22:30	35	0 ²	-	0
	22:45	35	0 ²	-	0
11/06/2020	12:46	35	<13 (IA) ¹	-	0
	13:01	35	<13 (IA) ¹	-	0
	13:16	35	<12 (IA) ¹	-	0
	13:31	35	<11 (IA) ¹	-	0
	13:46	35	<11 (IA) ¹	-	0
	14:01	35	<10 (IA) ¹	-	0
	21:30	35	<7 (IA) ¹	-	0
	21:45	35	<8 (IA) ¹	-	0
	22:00	35	0 ²	-	0
	22:15	35	0 ²	-	0
	22:30	35	0 ²	-	0
	22:45	35	0 ²	-	0

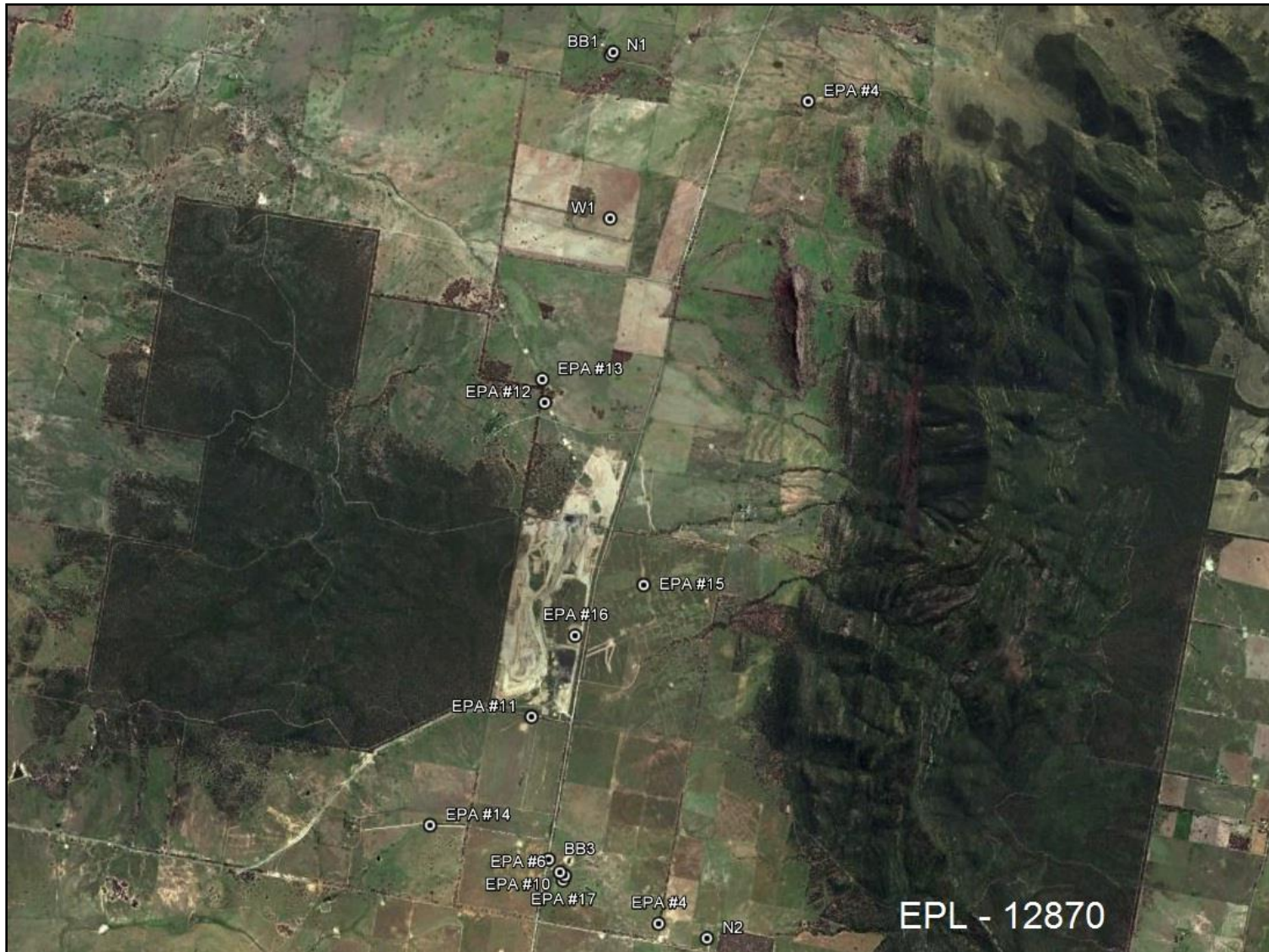
Rocglen Coal Mine- Monthly Monitoring Summary
Figure 1 – EPL 12870 Noise Monitoring Locations





WHITEHAVEN COAL

Rocglen Coal Mine- Monthly Monitoring Summary
Figure 2 – EPL 12870 Monitoring Locations





Rocglen Coal Mine- Monthly Monitoring Summary

Site Information

EPL No: 12870

EPA Website Link: <http://epa.nsw.gov.au/prpoeoapp/ViewPOEOLicence.aspx?DOCID=40278&SYSUID=1&LICID=12870>

Licensee: Whitehaven Coal Mining Pty Ltd

Licensee Address: Rocglen Coal Mine, Wean Road, GUNNEDAH NSW 2380

EPL Monitoring Points: See Figure 1 below

Sampling Period: July 2020

Obtained Date: 18th August 2020

Publication Date: 21st August 2020

Table 1 - No Pollutant Limits Apply

EPL ID	Pollutant	Units of Measure	Monitoring Frequency	No. of Samples for the Month	Date(s) Sampled	Date(s) Obtained	Min Value	Mean Value	Median Value	Max or Only Value
4	Particulates-Deposited Matter (BD4)	g/m ² /month	Continuous	1	17/07/2020	22/07/2020	-	-	-	1.6
6	Particulates-Deposited Matter (BD6)	g/m ² /month	Continuous	1	17/07/2020	22/07/2020	-	-	-	0.7
10	PM ₁₀	µg/m ³	Every 6 days	6	Various	18/08/2020	0.1	3.1	3.1	7.3
11	Conductivity	µS/cm	Special Frequency 1*	-	-	-	-	-	-	-
	Total Organic Carbon	mg/L					-	-	-	-
12	Conductivity	µS/cm	Special Frequency 1*	-	-	-	-	-	-	-
	Total Organic Carbon	mg/L					-	-	-	-
13	TSS	mg/L	Special Frequency 2**(DDCK)	-	-	-	-	-	-	-
	Conductivity	µS/cm					-	-	-	-
	Oil & Grease	mg/L					-	-	-	-
	pH	pH					-	-	-	-
	Total organic carbon	mg/L					-	-	-	-
14	TSS	mg/L		-	-	-	-	-	-	-
	Conductivity	µS/cm					-	-	-	-



WHITEHAVEN COAL

Rocgen Coal Mine- Monthly Monitoring Summary

EPL ID	Pollutant	Units of Measure	Monitoring Frequency	No. of Samples for the Month	Date(s) Sampled	Date(s) Obtained	Min Value	Mean Value	Median Value	Max or Only Value
	Oil & Grease	mg/L	Special Frequency 2**(UNDC)				-	-	-	-
	pH	pH					-	-	-	-
	Total organic carbon	mg/L					-	-	-	-
15	TSS	mg/L	Special Frequency 2** (SD7)	-	-	-	-	-	-	-
	Conductivity	µS /cm					-	-	-	-
	Oil & Grease	mg/L					-	-	-	-
	pH	pH					-	-	-	-
	Total organic carbon	mg/L					-	-	-	-

Table 2 - Pollutant Limits Apply

EPL ID	Pollutant	Units of Measure	Monitoring Frequency	No. of Samples for the Month	Date(s) Sampled	Date(s) Obtained	Min Value	Max or Only Value	100%ile Limit	Exceedance (Yes/No)	Comments
11	TSS	mg/L	Special Frequency 1* (LDP11)	-	-	-	-	-	50	-	-
	Oil & Grease	mg/L					-	-	10	-	
	pH	pH					-	-	6.5-8.5	-	
12	TSS	mg/L	Special Frequency 1* (LDP12)	-	-	-	-	-	50	-	-
	Oil & Grease	mg/L					-	-	10	-	
	pH	pH					-	-	6.5-8.5	-	



Rocgen Coal Mine- Monthly Monitoring Summary

* Special Frequency 1 means the collection of samples as soon as practicable after each discharge commences and in any case not more than 12 hours after each discharge commences.

** Special Frequency 2 means collection of samples quarterly (in the event of flow during the quarter) at a time when there is flow and as soon as practicable after each wet weather discharge from points 11 and 12 commences and in any case not more than 12 hours after each discharge commences.

Table 3 – Monitoring (Quarterly & Yearly – No Limits apply)

EPL ID	Pollutant	Units of Measure	Monitoring Frequency	No. of Samples for the Month	Date Sampled	Date Obtained	Min Value	Mean Value	Median Value	Max Value/Only Value
16	Aluminium	mg/L	Yearly	-	-	-	-	-	-	-
	Arsenic	mg/L					-	-	-	-
	Bicarbonate	mg/L					-	-	-	-
	Chloride	mg/L					-	-	-	-
	Iron	mg/L					-	-	-	-
	Manganese	mg/L					-	-	-	-
	Sodium	mg/L					-	-	-	-
16	Conductivity	µS/cm	Quarterly	-	-	-	-	-	-	-
	Oil & Grease	mg/L					-	-	-	-
	pH	pH					-	-	-	-
	TOC	mg/L					-	-	-	-
	TSS	mg/L					-	-	-	-



WHITEHAVEN COAL

Rocgen Coal Mine- Monthly Monitoring Summary

Figure 1 – EPL 12870 Monitoring Locations





Rocglen Coal Mine- Monthly Monitoring Summary

Site Information

EPL No: 12870

EPA Website Link: <http://epa.nsw.gov.au/prpoeoapp/ViewPOEOLicence.aspx?DOCID=40278&SYSUID=1&LICID=12870>

Licensee: Whitehaven Coal Mining Pty Ltd

Licensee Address: Rocglen Coal Mine, Wean Road, GUNNEDAH NSW 2380

EPL Monitoring Points: See Figure 1 below

Sampling Period: August 2020

Obtained Date: 14th September 2020

Publication Date: 18th September 2020

Table 1 - No Pollutant Limits Apply

EPL ID	Pollutant	Units of Measure	Monitoring Frequency	No. of Samples for the Month	Date(s) Sampled	Date(s) Obtained	Min Value	Mean Value	Median Value	Max or Only Value
4	Particulates-Deposited Matter (BD4)	g/m2/month	Continuous	1	17/08/2020	01/09/2020	-	-	-	0.9
6	Particulates-Deposited Matter (BD6)	g/m2/month	Continuous	1	17/08/2020	01/09/2020	-	-	-	1.0
10	PM ₁₀	µg/m ³	Every 6 days	5	Various	14/09/2020	5.2	9.32	7.6	16.5
11	Conductivity	µS/cm	Special Frequency 1*	-	-	-	-	-	-	-
	Total Organic Carbon	mg/L					-	-	-	-
12	Conductivity	µS/cm	Special Frequency 1*	-	-	-	-	-	-	-
	Total Organic Carbon	mg/L					-	-	-	-
13	TSS	mg/L	Special Frequency 2**(DDCK)	-	-	-	-	-	-	-
	Conductivity	µS/cm					-	-	-	-
	Oil & Grease	mg/L					-	-	-	-
	pH	pH					-	-	-	-
	Total organic carbon	mg/L					-	-	-	-



WHITEHAVEN COAL

Rocgen Coal Mine- Monthly Monitoring Summary

EPL ID	Pollutant	Units of Measure	Monitoring Frequency	No. of Samples for the Month	Date(s) Sampled	Date(s) Obtained	Min Value	Mean Value	Median Value	Max or Only Value
14	TSS	mg/L	Special Frequency 2**(UNDC)	-	-	-	-	-	-	-
	Conductivity	µS/cm					-	-	-	-
	Oil & Grease	mg/L					-	-	-	-
	pH	pH					-	-	-	-
	Total organic carbon	mg/L					-	-	-	-
15	TSS	mg/L	Special Frequency 2**(SD7)	-	-	-	-	-	-	-
	Conductivity	µS /cm					-	-	-	-
	Oil & Grease	mg/L					-	-	-	-
	pH	pH					-	-	-	-
	Total organic carbon	mg/L					-	-	-	-

Table 2 - Pollutant Limits Apply

EPL ID	Pollutant	Units of Measure	Monitoring Frequency	No. of Samples for the Month	Date(s) Sampled	Date(s) Obtained	Min Value	Max or Only Value	100%ile Limit	Exceedance (Yes/No)	Comments
11	TSS	mg/L	Special Frequency 1* (LDP11)	-	-	-	-	-	50	-	-
	Oil & Grease	mg/L					-	-	10	-	
	pH	pH					-	-	6.5-8.5	-	
12	TSS	mg/L	Special Frequency 1* (LDP12)	-	-	-	-	-	50	-	-
	Oil & Grease	mg/L					-	-	10	-	
	pH	pH					-	-	6.5-8.5	-	

* Special Frequency 1 means the collection of samples as soon as practicable after each discharge commences and in any case not more than 12 hours after each discharge commences.

** Special Frequency 2 means collection of samples quarterly (in the event of flow during the quarter) at a time when there is flow and as soon as practicable after each wet weather discharge from points 11 and 12 commences and in any case not more than 12 hours after each discharge commences.



WHITEHAVEN COAL

Rocgen Coal Mine- Monthly Monitoring Summary

Table 3 – Monitoring (Quarterly & Yearly – No Limits apply)

EPL ID	Pollutant	Units of Measure	Monitoring Frequency	No. of Samples for the Month	Date Sampled	Date Obtained	Min Value	Mean Value	Median Value	Max Value/Only Value
16	Aluminium	mg/L	Yearly	-	-	-	-	-	-	-
	Arsenic	mg/L					-	-	-	-
	Bicarbonate	mg/L					-	-	-	-
	Chloride	mg/L					-	-	-	-
	Iron	mg/L					-	-	-	-
	Manganese	mg/L					-	-	-	-
	Sodium	mg/L					-	-	-	-
16	Conductivity	µS/cm	Quarterly	1	5/08/2020	14/08/2020	-	-	-	510
	Oil & Grease	mg/L					-	-	-	5
	pH	pH					-	-	-	8.10
	TOC	mg/L					-	-	-	3
	TSS	mg/L					-	-	-	91



WHITEHAVEN COAL

Rocgen Coal Mine- Monthly Monitoring Summary
Figure 1 – EPL 12870 Monitoring Locations





Rocglen Coal Mine- Monthly Monitoring Summary

Site Information

EPL No: 12870

EPA Website Link: <http://epa.nsw.gov.au/prpoeoapp/ViewPOEOLicence.aspx?DOCID=40278&SYSUID=1&LICID=12870>

Licensee: Whitehaven Coal Mining Pty Ltd

Licensee Address: Rocglen Coal Mine, Wean Road, GUNNEDAH NSW 2380

EPL Monitoring Points: See Figure 1 below

Sampling Period: September 2020

Obtained Date: 15th October 2020

Publication Date: 23rd October 2020

Table 1 - No Pollutant Limits Apply

EPL ID	Pollutant	Units of Measure	Monitoring Frequency	No. of Samples for the Month	Date(s) Sampled	Date(s) Obtained	Min Value	Mean Value	Median Value	Max or Only Value
4	Particulates-Deposited Matter (BD4)	g/m2/month	Continuous	1	17/09/2020	01/10/2020	-	-	-	0.8
6	Particulates-Deposited Matter (BD6)	g/m2/month	Continuous	1	17/09/2020	01/10/2020	-	-	-	2.5
10	PM ₁₀	µg/m ³	Every 6 days	5	Various	14/10/2020	3.2	11	10.4	19.7
11	Conductivity	µS/cm	Special Frequency 1*	-	-	-	-	-	-	-
	Total Organic Carbon	mg/L		-	-	-	-	-	-	-
12	Conductivity	µS/cm	Special Frequency 1*	-	-	-	-	-	-	-
	Total Organic Carbon	mg/L		-	-	-	-	-	-	-
13	TSS	mg/L	Special Frequency 2**(DDCK)	-	-	-	-	-	-	-
	Conductivity	µS/cm					-	-	-	-
	Oil & Grease	mg/L					-	-	-	-
	pH	pH					-	-	-	-
	Total organic carbon	mg/L					-	-	-	-
14	TSS	mg/L		-	-	-	-	-	-	-
	Conductivity	µS/cm					-	-	-	-



WHITEHAVEN COAL

Rocgen Coal Mine- Monthly Monitoring Summary

EPL ID	Pollutant	Units of Measure	Monitoring Frequency	No. of Samples for the Month	Date(s) Sampled	Date(s) Obtained	Min Value	Mean Value	Median Value	Max or Only Value
	Oil & Grease	mg/L	Special Frequency 2**(UNDC)				-	-	-	-
	pH	pH					-	-	-	-
	Total organic carbon	mg/L					-	-	-	-
15	TSS	mg/L	Special Frequency 2** (SD7)	-	-	-	-	-	-	-
	Conductivity	µS /cm					-	-	-	-
	Oil & Grease	mg/L					-	-	-	-
	pH	pH					-	-	-	-
	Total organic carbon	mg/L					-	-	-	-

Table 2 - Pollutant Limits Apply

EPL ID	Pollutant	Units of Measure	Monitoring Frequency	No. of Samples for the Month	Date(s) Sampled	Date(s) Obtained	Min Value	Max or Only Value	100%ile Limit	Exceedance (Yes/No)	Comments
11	TSS	mg/L	Special Frequency 1* (LDP11)	1	3/09/2020	8/10/2020	-	18	50	No	Dam flocked and discharged on 8/10/20
	Oil & Grease	mg/L					-	<5	10	No	
	pH	pH					-	7.92	6.5-8.5	No	
12	TSS	mg/L	Special Frequency 1* (LDP12)	-	-	-	-	-	50	-	-
	Oil & Grease	mg/L					-	-	10	-	
	pH	pH					-	-	6.5-8.5	-	

* Special Frequency 1 means the collection of samples as soon as practicable after each discharge commences and in any case not more than 12 hours after each discharge commences.

** Special Frequency 2 means collection of samples quarterly (in the event of flow during the quarter) at a time when there is flow and as soon as practicable after each wet weather discharge from points 11 and 12 commences and in any case not more than 12 hours after each discharge commences.

Rocgen Coal Mine- Monthly Monitoring Summary

Table 3 – Monitoring (Quarterly & Yearly – No Limits apply)

EPL ID	Pollutant	Units of Measure	Monitoring Frequency	No. of Samples for the Month	Date Sampled	Date Obtained	Min Value	Mean Value	Median Value	Max Value/Only Value
16	Aluminium	mg/L	Yearly	-	-	-	-	-	-	-
	Arsenic	mg/L					-	-	-	-
	Bicarbonate	mg/L					-	-	-	-
	Chloride	mg/L					-	-	-	-
	Iron	mg/L					-	-	-	-
	Manganese	mg/L					-	-	-	-
	Sodium	mg/L					-	-	-	-
16	Conductivity	µS/cm	Quarterly	-	-	-	-	-	-	-
	Oil & Grease	mg/L					-	-	-	-
	pH	pH					-	-	-	-
	TOC	mg/L					-	-	-	-
	TSS	mg/L					-	-	-	-



WHITEHAVEN COAL

Rocgen Coal Mine- Monthly Monitoring Summary

Figure 1 – EPL 12870 Monitoring Locations





Rocglen Coal Mine- Monthly Monitoring Summary

Site Information

EPL No: 12870

EPA Website Link: <http://epa.nsw.gov.au/prpoeoapp/ViewPOEOLicence.aspx?DOCID=40278&SYSUID=1&LICID=12870>

Licensee: Whitehaven Coal Mining Pty Ltd

Licensee Address: Rocglen Coal Mine, Wean Road, GUNNEDAH NSW 2380

EPL Monitoring Points: See Figure 1 below

Sampling Period: October 2020

Obtained Date: 3rd November 2020

Publication Date: 20th November 2020

Table 1 - No Pollutant Limits Apply

EPL ID	Pollutant	Units of Measure	Monitoring Frequency	No. of Samples for the Month	Date(s) Sampled	Date(s) Obtained	Min Value	Mean Value	Median Value	Max or Only Value
4	Particulates-Deposited Matter (BD4)	g/m2/month	Continuous	1	15/10/2020	21/10/2020	-	-	-	2.1
6	Particulates-Deposited Matter (BD6)	g/m2/month	Continuous	1	15/10/2020	21/10/2020	-	-	-	0.8
10	PM ₁₀	µg/m3	Every 6 days	5	Various	3/11/2020	8.8	14.2	14.4	23.1
11	Conductivity	µS/cm	Special Frequency 1*	-	-	-	-	-	-	-
	Total Organic Carbon	mg/L					-	-	-	-
12	Conductivity	µS/cm	Special Frequency 1*	-	-	-	-	-	-	-
	Total Organic Carbon	mg/L					-	-	-	-
13	TSS	mg/L	Special Frequency 2**(DDCK)	-	-	-	-	-	-	-
	Conductivity	µS/cm					-	-	-	-
	Oil & Grease	mg/L					-	-	-	-
	pH	pH					-	-	-	-
	Total organic carbon	mg/L					-	-	-	-



Rocgen Coal Mine- Monthly Monitoring Summary

EPL ID	Pollutant	Units of Measure	Monitoring Frequency	No. of Samples for the Month	Date(s) Sampled	Date(s) Obtained	Min Value	Mean Value	Median Value	Max or Only Value
14	TSS	mg/L	Special Frequency 2**(UNDC)	-	-	-	-	-	-	-
	Conductivity	µS/cm					-	-	-	-
	Oil & Grease	mg/L					-	-	-	-
	pH	pH					-	-	-	-
	Total organic carbon	mg/L					-	-	-	-
15	TSS	mg/L	Special Frequency 2** (SD7)	-	-	-	-	-	-	-
	Conductivity	µS/cm					-	-	-	-
	Oil & Grease	mg/L					-	-	-	-
	pH	pH					-	-	-	-
	Total organic carbon	mg/L					-	-	-	-

Table 2 - Pollutant Limits Apply

EPL ID	Pollutant	Units of Measure	Monitoring Frequency	No. of Samples for the Month	Date(s) Sampled	Date(s) Obtained	Min Value	Max or Only Value	100%ile Limit	Exceedance (Yes/No)	Comments
11	TSS	mg/L	Special Frequency 1* (LDP11)	-	-	-	-	-	50	-	-
	Oil & Grease	mg/L					-	-	10	-	
	pH	pH					-	-	6.5-8.5	-	
12	TSS	mg/L	Special Frequency 1* (LDP12)	-	-	-	-	-	50	-	-
	Oil & Grease	mg/L					-	-	10	-	
	pH	pH					-	-	6.5-8.5	-	

* Special Frequency 1 means the collection of samples as soon as practicable after each discharge commences and in any case not more than 12 hours after each discharge commences.

** Special Frequency 2 means collection of samples quarterly (in the event of flow during the quarter) at a time when there is flow and as soon as practicable after each wet weather discharge from points 11 and 12 commences and in any case not more than 12 hours after each discharge commences.



Rocgen Coal Mine- Monthly Monitoring Summary

Table 3 – Monitoring (Quarterly & Yearly – No Limits apply)

EPL ID	Pollutant	Units of Measure	Monitoring Frequency	No. of Samples for the Month	Date Sampled	Date Obtained	Min Value	Mean Value	Median Value	Max Value/Only Value
16	Aluminium	mg/L	Yearly	-	-	-	-	-	-	-
	Arsenic	mg/L					-	-	-	-
	Bicarbonate	mg/L					-	-	-	-
	Chloride	mg/L					-	-	-	-
	Iron	mg/L					-	-	-	-
	Manganese	mg/L					-	-	-	-
	Sodium	mg/L					-	-	-	-
16	Conductivity	µS/cm	Quarterly	-	-	-	-	-	-	-
	Oil & Grease	mg/L					-	-	-	-
	pH	pH					-	-	-	-
	TOC	mg/L					-	-	-	-
	TSS	mg/L					-	-	-	-



WHITEHAVEN COAL

Rocgen Coal Mine- Monthly Monitoring Summary
Figure 1 – EPL 12870 Monitoring Locations





Rocglen Coal Mine- Monthly Monitoring Summary

Site Information

EPL No: 12870

EPA Website Link: <http://epa.nsw.gov.au/prpoeoapp/ViewPOEOLicence.aspx?DOCID=40278&SYSUID=1&LICID=12870>

Licensee: Whitehaven Coal Mining Pty Ltd

Licensee Address: Rocglen Coal Mine, Wean Road, GUNNEDAH NSW 2380

EPL Monitoring Points: See Figure 1 below

Sampling Period: November 2020

Obtained Date: 11th December 2020

Publication Date: 15th December 2020

Table 1 - No Pollutant Limits Apply

EPL ID	Pollutant	Units of Measure	Monitoring Frequency	No. of Samples for the Month	Date(s) Sampled	Date(s) Obtained	Min Value	Mean Value	Median Value	Max or Only Value
4	Particulates-Deposited Matter (BD4)	g/m2/month	Continuous	1	18/11/20	30/11/20	-	-	-	2
6	Particulates-Deposited Matter (BD6)	g/m2/month	Continuous	1	18/11/20	30/11/20	-	-	-	1.6
10	PM ₁₀	µg/m ³	Every 6 days	5	Various	11/12/20	11.5	19.5	17.4	29.2
11	Conductivity	µS/cm	Special Frequency 1*	-	-	-	-	-	-	-
	Total Organic Carbon	mg/L					-	-	-	-
12	Conductivity	µS/cm	Special Frequency 1*	1	12/11/2020	17/11/2020	-	-	-	368
	Total Organic Carbon	mg/L					-	-	-	4
13	TSS	mg/L	Special Frequency 2**(DDCK)	-	-	-	-	-	-	-
	Conductivity	µS/cm					-	-	-	-
	Oil & Grease	mg/L					-	-	-	-
	pH	pH					-	-	-	-
	Total organic carbon	mg/L					-	-	-	-



WHITEHAVEN COAL

Rocgen Coal Mine- Monthly Monitoring Summary

EPL ID	Pollutant	Units of Measure	Monitoring Frequency	No. of Samples for the Month	Date(s) Sampled	Date(s) Obtained	Min Value	Mean Value	Median Value	Max or Only Value
14	TSS	mg/L	Special Frequency 2**(UNDC)	-	-	-	-	-	-	-
	Conductivity	µS/cm					-	-	-	-
	Oil & Grease	mg/L					-	-	-	-
	pH	pH					-	-	-	-
	Total organic carbon	mg/L					-	-	-	-
15	TSS	mg/L	Special Frequency 2**(SD7)	-	-	-	-	-	-	-
	Conductivity	µS /cm					-	-	-	-
	Oil & Grease	mg/L					-	-	-	-
	pH	pH					-	-	-	-
	Total organic carbon	mg/L					-	-	-	-

Table 2 - Pollutant Limits Apply

EPL ID	Pollutant	Units of Measure	Monitoring Frequency	No. of Samples for the Month	Date(s) Sampled	Date(s) Obtained	Min Value	Max or Only Value	100%ile Limit	Exceedance (Yes/No)	Comments
11	TSS	mg/L	Special Frequency 1* (LDP11)	-	-	-	-	-	50	-	-
	Oil & Grease	mg/L					-	-	10	-	
	pH	pH					-	-	6.5-8.5	-	
12	TSS	mg/L	Special Frequency 1* (LDP12)	1	12/11/2020	17/11/2020	-	20	50	No	-
	Oil & Grease	mg/L					-	<5	10	No	
	pH	pH					-	8.36	6.5-8.5	No	

* Special Frequency 1 means the collection of samples as soon as practicable after each discharge commences and in any case not more than 12 hours after each discharge commences.

** Special Frequency 2 means collection of samples quarterly (in the event of flow during the quarter) at a time when there is flow and as soon as practicable after each wet weather discharge from points 11 and 12 commences and in any case not more than 12 hours after each discharge commences.



Rocgen Coal Mine- Monthly Monitoring Summary
Table 3 – Monitoring (Quarterly & Yearly – No Limits apply)

EPL ID	Pollutant	Units of Measure	Monitoring Frequency	No. of Samples for the Month	Date Sampled	Date Obtained	Min Value	Mean Value	Median Value	Max Value/Only Value
16	Aluminium	mg/L	Yearly	-	-	-	-	-	-	-
	Arsenic	mg/L					-	-	-	-
	Bicarbonate	mg/L					-	-	-	-
	Chloride	mg/L					-	-	-	-
	Iron	mg/L					-	-	-	-
	Manganese	mg/L					-	-	-	-
	Sodium	mg/L					-	-	-	-
16	Conductivity	µS/cm	Quarterly	1	23/11/2020	1/12/2020	-	-	-	547
	Oil & Grease	mg/L					-	-	-	2.5
	pH	pH					-	-	-	8.4
	TOC	mg/L					-	-	-	2
	TSS	mg/L					-	-	-	411



WHITEHAVEN COAL

Rocglen Coal Mine- Monthly Monitoring Summary
Figure 1 – EPL 12870 Monitoring Locations



Rocglen Coal Mine- Monthly Monitoring Summary

Site Information

EPL No: 12870

EPA Website Link: <http://epa.nsw.gov.au/prpoeoapp/ViewPOEOLicence.aspx?DOCID=40278&SYSUID=1&LICID=12870>

Licensee: Whitehaven Coal Mining Pty Ltd

Licensee Address: Rocglen Coal Mine, Wean Road, GUNNEDAH NSW 2380

EPL Monitoring Points: See Figure 1 below

Sampling Period: December 2020

Obtained Date: 12th January 2021

Publication Date: 20th January 2021

Table 1 - No Pollutant Limits Apply

EPL ID	Pollutant	Units of Measure	Monitoring Frequency	No. of Samples for the Month	Date(s) Sampled	Date(s) Obtained	Min Value	Mean Value	Median Value	Max or Only Value
4	Particulates-Deposited Matter (BD4)	g/m2/month	Continuous	1	16/12/20	04/01/21	-	-	-	1.8
6	Particulates-Deposited Matter (BD6)	g/m2/month	Continuous	1	16/12/20	04/01/21	-	-	-	1.9
10	PM ₁₀	µg/m3	Every 6 days	5	Various	12/01/21	7.1	12	9.2	24
11	Conductivity	µS/cm	Special Frequency 1*	1	29/12/2020	7/01/2020	-	-	-	432
	Total Organic Carbon	mg/L					-	-	-	5
12	Conductivity	µS/cm	Special Frequency 1*	-	-	-	-	-	-	-
	Total Organic Carbon	mg/L					-	-	-	-
13	TSS	mg/L	Special Frequency 2**(DDCK)	-	-	-	-	-	-	-
	Conductivity	µS/cm					-	-	-	-
	Oil & Grease	mg/L					-	-	-	-
	pH	pH					-	-	-	-
	Total organic carbon	mg/L					-	-	-	-



Rocgen Coal Mine- Monthly Monitoring Summary

EPL ID	Pollutant	Units of Measure	Monitoring Frequency	No. of Samples for the Month	Date(s) Sampled	Date(s) Obtained	Min Value	Mean Value	Median Value	Max or Only Value
14	TSS	mg/L	Special Frequency 2**(UNDC)	-	-	-	-	-	-	-
	Conductivity	µS/cm					-	-	-	-
	Oil & Grease	mg/L					-	-	-	-
	pH	pH					-	-	-	-
	Total organic carbon	mg/L					-	-	-	-
15	TSS	mg/L	Special Frequency 2**(SD7)	-	-	-	-	-	-	-
	Conductivity	µS /cm					-	-	-	-
	Oil & Grease	mg/L					-	-	-	-
	pH	pH					-	-	-	-
	Total organic carbon	mg/L					-	-	-	-

Table 2 - Pollutant Limits Apply

EPL ID	Pollutant	Units of Measure	Monitoring Frequency	No. of Samples for the Month	Date(s) Sampled	Date(s) Obtained	Min Value	Max or Only Value	100%ile Limit	Exceedance (Yes/No)	Comments
11	TSS	mg/L	Special Frequency 1* (LDP11)	1	29/12/2020	7/01/2020	-	370	50	No	Wet Weather Discharge
	Oil & Grease	mg/L					-	<5	10	No	
	pH	pH					-	8.4	6.5-8.5	No	
12	TSS	mg/L	Special Frequency 1* (LDP12)	-	-	-	-	-	50	-	-
	Oil & Grease	mg/L					-	-	10	-	
	pH	pH					-	-	6.5-8.5	-	

* Special Frequency 1 means the collection of samples as soon as practicable after each discharge commences and, in any case, not more than 12 hours after each discharge commences.

** Special Frequency 2 means collection of samples quarterly (in the event of flow during the quarter) at a time when there is flow and as soon as practicable after each wet weather discharge from points 11 and 12 commences and in any case not more than 12 hours after each discharge commences.



WHITEHAVEN COAL

Rocgen Coal Mine- Monthly Monitoring Summary

Table 3 – Monitoring (Quarterly & Yearly – No Limits apply)

EPL ID	Pollutant	Units of Measure	Monitoring Frequency	No. of Samples for the Month	Date Sampled	Date Obtained	Min Value	Mean Value	Median Value	Max Value/Only Value
16	Aluminium	mg/L	Yearly	-	-	-	-	-	-	-
	Arsenic	mg/L					-	-	-	-
	Bicarbonate	mg/L					-	-	-	-
	Chloride	mg/L					-	-	-	-
	Iron	mg/L					-	-	-	-
	Manganese	mg/L					-	-	-	-
	Sodium	mg/L					-	-	-	-
16	Conductivity	µS/cm	Quarterly	-	-	-	-	-	-	-
	Oil & Grease	mg/L					-	-	-	-
	pH	pH					-	-	-	-
	TOC	mg/L					-	-	-	-
	TSS	mg/L					-	-	-	-



WHITEHAVEN COAL

Rocglen Coal Mine- Monthly Monitoring Summary

Figure 1 – EPL 12870 Monitoring Locations

